

How to use generative AI applications?

What to consider?



- Prefer applications for which Tampere universities has a contract
- Most of the applications still in pilot/development phase
- For free apps, avoid using your work email and phone number (still allowed within the limits of your work duties)
- Students cannot be obliged to register to free apps
- Do not process personal data or confidential data with AI apps (if you are not sure how and where your data is processed)
- Read more: [Tampere universities AI instructions](#)

Contract available



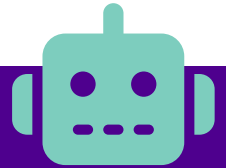
Microsoft Copilot (with TUNI ID): AI chatbot and AI image generator (GPT-4 and DALL-E 3)

- Available for staff and students (18+ age) with TUNI ID
- Do not process personal data or confidential data (may be processed outside EU). Processing of internal data is permitted.
- Data is not stored by the AI and data is not used to train the AI
- [Read instructions and start using](#)

Adobe Express: AI image generator + image editing tools

- Available with TUNI ID:
Sign in > Continue with email > Your TUNI email address
- Still in beta phase, be prepared for changes

Free applications



ChatGPT: AI chatbot (GPT-3.5 in free version)

- Registration, separate user ID

Microsoft Copilot (free consumer version): AI chatbot and AI image generator (GPT-4 and DALL-E 3)

- Free consumer version is not recommended, as Copilot is also available with a your TUNI ID, with better privacy protection and security

Google Gemini: AI chatbot

- Registration, consumer-Google-ID required

What else?

- There's already a lot, see listing: [Futurepedia.io](#)