


# Campus development strategy

2020–2030






# Efficient everyday life on campus – now and in the future

## **Campuses as part of efficient everyday life**

- campuses are part of the living city structure with easy access
- physical and digital environments and services meet different user needs seamlessly and are easy to reach
- new environments for learning and working support activities that are not bound to time or place
- facilities are cosy, functional, safe and healthy



In the campus facilities of the Tampere Universities community, the operational development of the facilities and related functions provide an opportunity to promote responsibility and co-creation in the community.

The goal of campus development is to create multi-purpose environments that support the everyday life of the community in the best possible way when people study, work, do research and meet others - facilities that correspond to the changing needs of the users and society now and in the future.

On the campuses of the future, physical, digital and virtual environments blend in an accessible manner. At the same time, they support new types of learning, researching and working, which are not bound to time or place. The operating environments foster cooperation both within the community and with the business world, and the public and third sectors. They create a platform for co-operation and building an ecosystem.

The functional development needs of the facilities and their use have been acknowledged in the community. This is evident from the [Current state analysis of campus development \(2019\)](#). The campus development strategy will be implemented from 2020 to 2030 according to the needs arising from the higher education community's strategies and those using the facilities both in the shorter and longer term, in constant interaction with the community. Societal changes also have a bearing on campus development.

## Supporting our common everyday life

The goal of the Universities community is to build sustainable operations and society and to create synergies from co-operation in the entire community. This requires an active development of all the environments we are using. By developing the campuses, we may gain ecological and economic benefits and increase well-being.

Changes in the operating environment and society, such as the needs arising from new types of learning and digitalisation, affect the operations of higher education institutions and the development of campuses. The experiences from the covid-19 pandemic in the spring of 2020 emphasise the need for flexible work and study solutions where digital and physical operating environments merge to support the users' everyday life and well-being.



# Responsibly for the benefit of the environment and community

**Campus development is carried out responsibly and sustainably and it fosters the dynamism of the higher education community.** At present, the higher education community has many facilities with a low utilisation rate. By giving up some facilities we will create opportunities for new openings and cooperation. At the same time, we can allocate resources for the responsible and high-quality development of the spaces we are using.

Social, cultural, ecological and economic responsibility is also carried out by sharing and opening spaces and infrastructure for wider use in the entire community and society, and by the smooth merging of physical and digital and environments.

## Social and cultural responsibility

**Accessible jointly used spaces that change according to the users' work methods foster the community spirit and the multicultural, equal encounters between fields of science.**

This reinforces opportunities for multidisciplinary, international teaching, research and innovation cooperation across fields of science, faculties and units.

Ergonomic, safe and healthy spaces that change according to the users' work methods enable an efficient everyday life. Studying, working and research environments flexibly adapt to users' needs and work methods

so that there is enough space for quiet working and interaction. The development considers different learners and work methods so that the campuses are an environment that supports the learning and working of all community members.

A dialogue on spatial and functional development supports the well-being of staff and students in studies, work and leisure.

On the campuses, versatile services, well-being and sports opportunities, and hobby and meeting places offer preconditions for enjoying the campuses outside studying and working times.

The history and heritage of the University's facilities and actions is acknowledged in development.

## Ecological responsibility

According to national climate goals, the Ministry of Education and Culture expects higher education institutions to also take action. **The goal of the Tampere Universities' community is to be carbon neutral by 2030. By 2030 and as part of fulfilling this goal, the number of the community's facilities will be decreased by 25 percent from the level they were at in 2019.** The facilities are decreased according to an action plan in pertinent locations and in close co-operation with the users of the facilities.

The jointly used efficient and adaptable facilities of the future are

actively used by staff, students and researchers in a versatile manner.

Physical, digital and virtual campus environments merge seamlessly, offering new ways of learning, researching and working that foster sustainable development.


Campus development engages with the facilities' owners in order to diminish the environmental impact of the facilities.

## Economic responsibility

Adaptable jointly used facilities and the development of operations supporting them enable a more efficient use of the facilities and a better occupancy rate. Facilities with duplicate functions may also be abandoned and used in a manner that meets the user needs better. In the long run, this will yield economic benefits.

**Up to date campus environments that support the Universities' actions are a significant factor influencing the competitiveness and attractiveness of the Universities community both domestically and internationally.**

The opening up of facilities to the surrounding society supports the vitality and internationalisation of research, innovation and development activities as well as interaction with businesses and public and third sector actors.



# Wise choices are found together

The campuses are developed in a continuous co-operation with the Universities community.

**Development needs in the everyday life of the campuses have been and will be identified with students and the entire staff. The solutions are planned on this basis together.**

The best results are achieved when the facilities correspond to changing operational needs. The physical facilities must support the needs and changes of desirable actions and be a part of them. The role of campus development is to use physical facilities to enable the operational development of the facilities in accordance with the needs of the

different faculties and units in the Universities community whether open-plan offices, need for quiet work spaces or a wider need for interaction between units and with society.

User experiences related to the facilities solutions are continuously collected and they will be used in further development.

The campus vision statements formulated with the Universities community guide the planning and development of spatial and functional solutions.





## A functioning campus

- builds on a multidisciplinary community and cooperation
- works as an ecosystem and a platform for co-creation
- encourages interaction with society and the world
- promotes responsible actions in the entire community
- provides experiences also outside study and working times

## Campus development theses

Campus development is guided by co-created campus development theses. Read more on the [intranet](#).



Versatile and adaptable facilities solutions



Facilities for meetings and co-operation



Cosy, attractive and thriving campuses



Shared use and responsible approach



Physically and digitally accessible campuses



Work and learning environments supporting objectives



An open community that has an impact on the world around it



A model that promotes building the higher education community



## Impact on three campuses

**The starting point for campus development is developing three campuses in Tampere.** The city centre campus, Hervanta campus and Kauppi campus - for both Tampere University and TAMK - are developed based on existing strengths in accordance with the strategic goals of the Universities community and the vision statements. In practice, the development is implemented by transferring and reorganising the operations on campuses. Digital connections are built between the campuses in Tampere and other cities in order to promote cooperation and feelings of community.

**The campuses are developed according to the campus strategy by actions for the shorter and longer term on all three campuses. [The basic measures](#) on all the campuses**

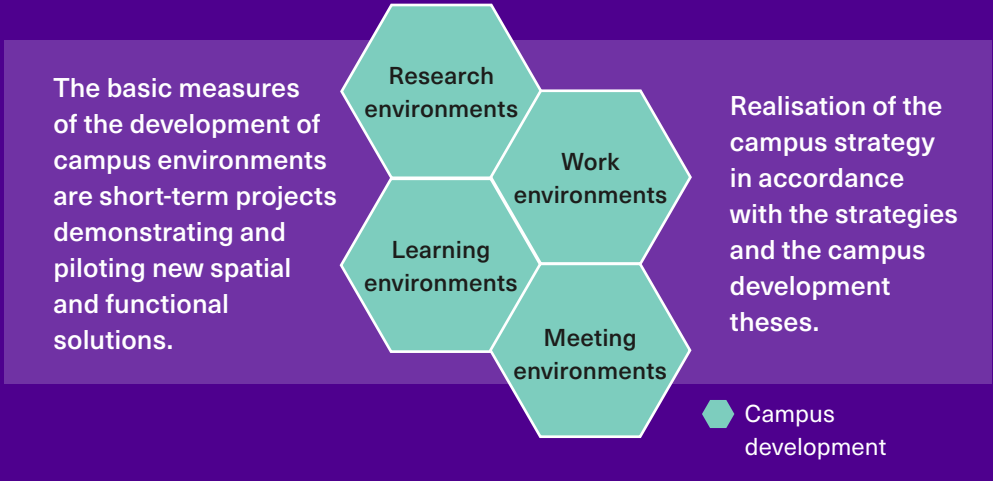
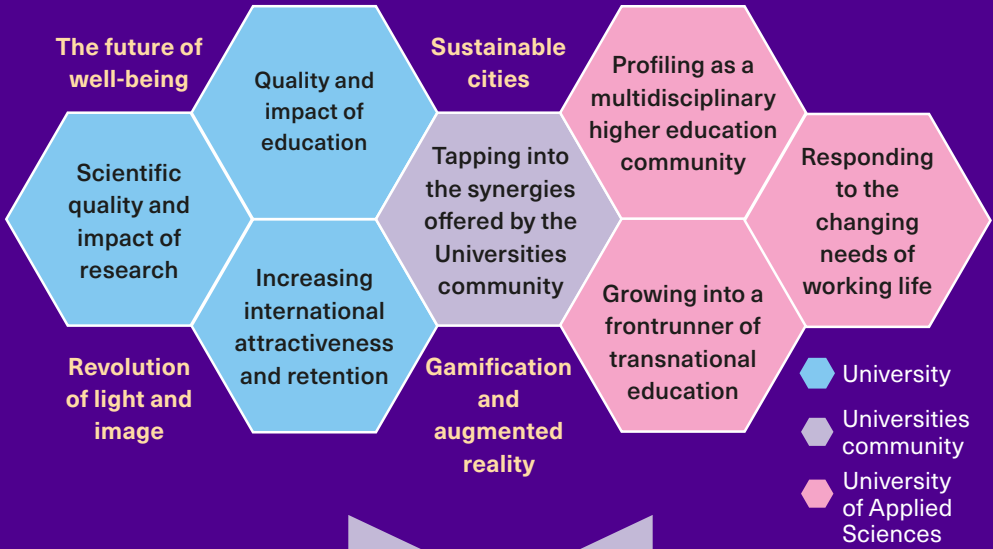
are realised in both physical and digital learning, working, researching and meeting environments.

**The aim is to integrate the user experience of physical and digital environments so that community members can study and work efficiently on any of the campuses regardless of their faculty or unit.**

The campus areas are a part of the dynamic Tampere urban environment. That is why it is important that the campus areas open to the city environment both spatially and functionally. This fosters versatile co-operation opportunities, the development of services and the dynamism, attractiveness and competitiveness of the Universities community.



# The strategies of the Universities community guide campus development



## Towards efficient everyday life on campuses 2020–2030

#kampuskehitystampere

#campusdevelopmentpotential



[campusdevelopment@tuni.fi](mailto:campusdevelopment@tuni.fi)



**Instagram:**  
TAU&TAMK Kampuskehitys



**Twitter:**  
Tampereen korkeakoulu yhteisön  
kampuskehitys

**Human  
Potential  
Unlimited.**